

# Structural Glass Solutions



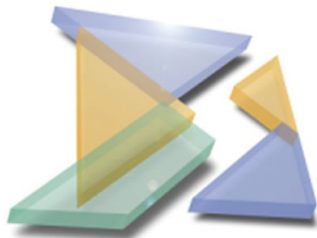
**Structural Glass Solutions Limited,**

Units 9-10 Harlescott Barns, March Way, Shrewsbury, SY1 3SY

T. 01743 461122

F. 01743 461123

E. [enquiry@glasssolutions.co.uk](mailto:enquiry@glasssolutions.co.uk)



## Structural Glass Solutions

### Product Range

Bolted Glass Facades such as Hansen Thermospan, Pilkington Planar and St Gobain Spiderglass.

Glass Canopies, with support steel if required.

Glass Tread Staircases

All Glass Balustrades.

Glass Flooring.

All Glass Shopfronts.

Bespoke glass features.

Tension wire structures.

Large span all glass roof structures.

Armourplate Facades and Entrances.

All Glass Entrances, Automatic, Sliding, Swing or Revolving.

Internal Glass Partitions, both fire rated and non-fire rated.

Dorma Approved Installer

*Attwood House, Birmingham - 2004*

*Willmott Dixon*

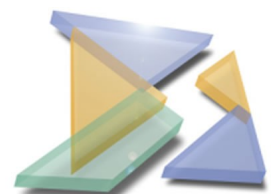
*Associated Architects*



327 m<sup>2</sup>

£148,000

Single Glazed 12mm on  
19mm fins



Structural Glass Solutions

## *Helmsley Castle, York - 2003*

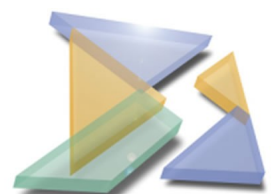
*Tom Willoughby  
Butress Fuller  
English Heritage*



*54 m<sup>2</sup>*

*£28,000*

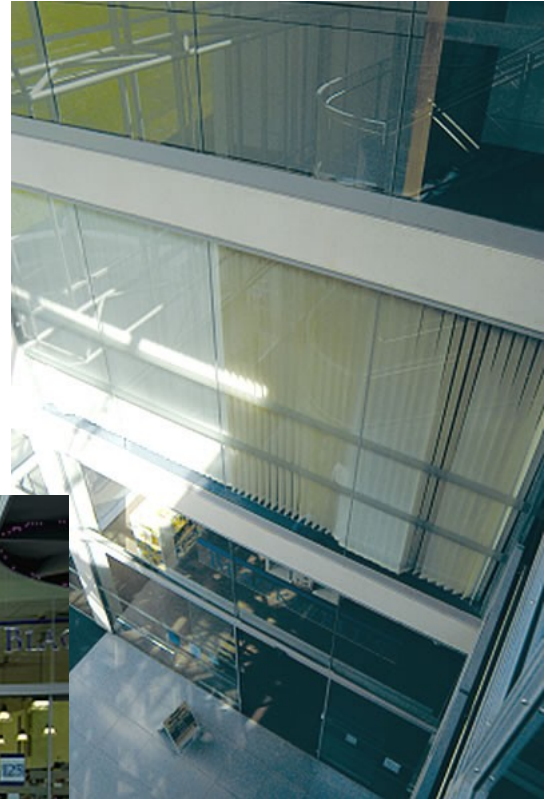
*Single Glazed 15mm  
Auto Doors  
Double Glazed on Fins*



**Structural Glass Solutions**

*Nottingham University, Portland Building - 2003*

*Willmott Dixon  
Hopkins Architects*



255 m<sup>2</sup>

£115,000



Single Glazed 12mm  
Auto Doors  
Entrance Screens



Structural Glass Solutions

## *Nottingham University, Portland Building - 2003*



Entry Control  
Systems

Glass Flooring



Light Well



Structural Glass Solutions

*Thanet Retail Park, Kent - 2006*



*McLaren  
Construction*

*BMD Architects*

£302,000

Single Glazed 10mm

Optifloat Green on Fins

Incorporating

Bi-Parting Autodoors



Structural Glass Solutions

## *Thanet Retail Park, Kent - 2006*



19.5 Laminated Canopy



Corporate  
Colours



Structural Glass Solutions

## *Waterloo Pavilions, Blackburn - 2003*



*Quadriga  
Concepts*

*Capita*

318 m<sup>2</sup>

£192,000

Double Glazed  
12 /16/6K on Steel  
Column Support



Structural Glass Solutions

## *Newport Arts Centre - 2004*



*E Turner & Sons*

*Austin Smith Lord*



Structural Glass Solutions

## *Thurlestone Hotel, Devon - 2005*

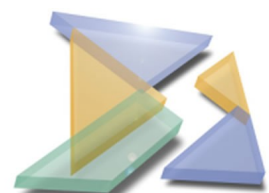


*Hayman  
Construction*

*Malcolm  
Northmore  
Associates*

*£260,000*

*Double Glazed  
12/16/6K on Fins and  
On Stainless Steel  
Column Support*



**Structural Glass Solutions**